



## PRODUCT GUIDE

 **Civils & Drainage**

 **Plumbing**

 **Water Management**





**Fernco is a specialist manufacturer and distributor to the civils & drainage, plumbing and water management sectors.**

The manufacture of flexible couplings for the repair of sewer and drainage systems has been at the heart of the company since it was established in 1989.

The company has since developed a wide range of complementary products related to the movement of water, which build on the company's expertise at creating watertight seals and joints and on its knowledge of the above market sectors.



Same and next day delivery available with delivery direct to site in 24hrs or less.



Bespoke manufacturing to customer requirements.



Comprehensive training offering for your staff and customers.



Market leading and award winning innovations.

# Fernco App



[findmy.fernco.co.uk](http://findmy.fernco.co.uk)

Download on the  
App Store

GET IT ON  
Google Play

**Tip:** Bookmark for quick access.



Use the product selector to find the coupling, lateral connection or pipe seal you need for a specific application.

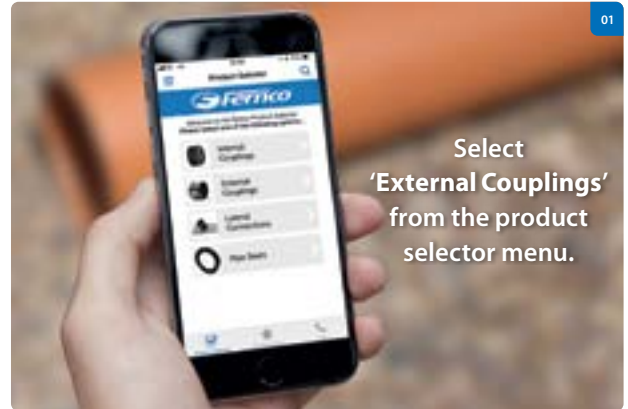


Save results from the product selector in your favourites list. You can use this as a shopping list in your local merchant.

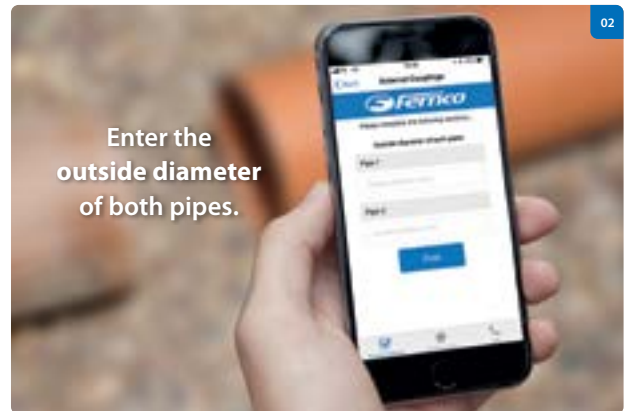


Have any questions? Not a problem, call Fernco straight from the app.

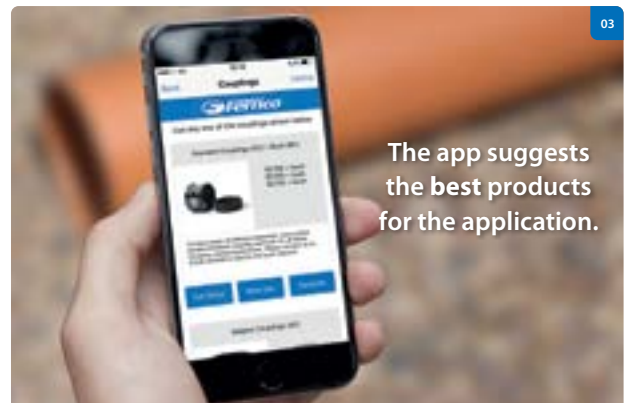
Connecting two drainage pipes?  
**3 simple steps** to find the  
coupling you need.



Select  
**'External Couplings'**  
from the product  
selector menu.



Enter the  
**outside diameter**  
of both pipes.



The app suggests  
the **best products**  
for the application.

Standard Couplings.....	8
Drain Couplings .....	14
Adaptor Couplings.....	16
AR Adaptor Couplings.....	20
Chemical Couplings.....	21
Large Diameter Couplings .....	22
Extra Wide Couplings .....	23
Magnum .....	24
Wraparound Couplings.....	25
Internal Couplings (ICON).....	26
Multibush .....	30
Bushes .....	31
Lateral Connections .....	32
FA Saddle.....	33
PA Saddle.....	33
UA Saddle.....	34
TA Saddle.....	34
Cast-in Puddle Flange.....	35
Cored Wall Seal.....	36
Universal Gully Seal .....	36
Insitu-Seal.....	37
Tank Seal .....	37
Pipe Lubricant.....	38
Drain Tracing Dye.....	39

### EPDM Plumbing Range

EPDM Straight Plumbing Couplings.....	42
EPDM Adaptor Plumbing Couplings .....	43
EPDM Plumbing Elbow.....	44
EPDM Plumbing Tee.....	44
EPDM End Caps .....	45

### PlumbQwik Couplings

PlumbQwik Couplings.....	46
--------------------------	----

### Other Plumbing Products

Pow-R Wrap.....	50
Air Admittance Valves (AAVs).....	51

Channel Drainage (Storm Drain Plus).....	52
Slot Drain.....	54
Access Point.....	55
Non-Return Valves .....	56
Backwater Valves.....	57
Penstocks .....	58
Flap Valves .....	60

# Standard Couplings



## 50-620mm diameter

Designed for sewerage, drainage and all non and low pressure applications up to 2.5 bar.

When excavation work is required to repair a damaged pipe, Fernco Standard Couplings will reduce the amount of time required and minor differences in pipe diameter can be accommodated.



### Applications

When used individually or combined with bushes, Fernco Standard Couplings have many applications in the construction, repair and maintenance of pipe systems:

- As a joint for plain ended pipes
- Repair and maintenance of existing pipelines
- Connecting short and cut lengths of pipe
- Making post construction connections to an existing pipeline
- Reconnection of laterals on renovated sewers
- WIS-4-41-01 approved and suitable for private and public sewers

The range is available in nitrile rubber for use with effluent contaminated with hydrocarbons, and with grade 1.4401 (316) stainless steel for improved corrosion resistance.



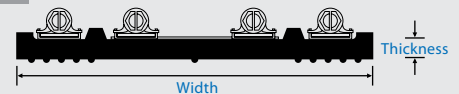
Scan for a demo movie



## Product Range

Product Code	Size (mm)	Width (mm)	Thickness (mm)
SC115	100 - 115	120	7
SC120	105 - 120	120	7
SC125	110 - 125	120	7
SC137	122 - 137	120	7
SC150	125 - 150	136	7
SC165	140 - 165	136	7
SC175	150 - 175	136	7
SC185	160 - 185	136	7
SC200	175 - 200	150	7.5
SC215	190 - 215	150	7.5
SC225	200 - 225	150	7.5
SC250	225 - 250	150	7.5
SC265	240 - 265	150	7.5
SC275	250 - 275	150	7.5
SC290	265 - 290	150	7.5
SC310	285 - 310	190	9
SC320	295 - 320	190	9
SC335	310 - 335	190	9
SC345	320 - 345	190	9
SC360	335 - 360	190	9
SC370	345 - 370	190	9
SC385	360 - 385	190	9
SC395	370 - 395	190	9
SC410	385 - 410	190	9
SC425	400 - 425	190	9
SC430	405 - 430	190	9
SC445	420 - 445	190	9
SC450	425 - 450	190	9
SC465	440 - 465	190	9
SC470	445 - 470	190	9
SC490	465 - 490	190	9
SC510	485 - 510	190	9
SC525	500 - 525	190	9
SC540	515 - 540	190	9
SC550	525 - 550	190	9
SC560	535 - 560	190	9
SC570	545 - 570	190	9
SC580	555 - 580	190	9
SC600	575 - 600	190	9
SC620	595 - 620	190	9

### Cross Section



# Standard Couplings - Common Applications



- SC115** — 110mm PVCu  
110mm ABS  
100mm CAST IRON (SMU/ENSGN/SML)  
111mm POLYETHYLENE

- SC120** — 110mm PVCu  
100mm CAST IRON (BS416)  
100mm STAINLESS STEEL  
100mm CAST IRON (BS437)  
100mm DUCTILE IRON  
100mm SUPERSLEVE (see also SC137)

- SC137** — 100mm (4") SALT GLAZED WARE  
100mm VITRIFIED CLAY  
100mm SUPERSLEVE  
100mm PITCH FIBRE  
100mm ASBESTOS CEMENT

- SC165** — 160mm PVCu  
150mm CAST IRON (SMU/ENSGN/SML)  
150mm STAINLESS STEEL  
160mm POLYETHYLENE

- SC175** — 160mm PVCu  
150mm DUCTILE IRON  
150mm CAST IRON (BS416)  
150mm CAST IRON (BS437)  
150mm STAINLESS STEEL  
150mm ULTRA-RIB  
150mm QUANTUM

- SC200** — 150mm (6") SALT GLAZED WARE  
150mm VITRIFIED CLAY  
150mm SUPERSLEVE  
150mm CONCRETE  
150mm ASBESTOS CEMENT  
150mm PITCH FIBRE  
180mm ULTRA-RIB  
200mm PVCu

- SC225** — 200mm DUCTILE IRON  
200mm CAST IRON (BS416)

- SC250** — 175mm PITCH FIBRE  
200mm VITRIFIED CLAY  
200mm ASBESTOS CEMENT  
225mm ULTRA-RIB  
225mm QUANTUM  
250mm PVCu

- SC265** — 225mm ASBESTOS CEMENT  
225mm DUCTILE IRON  
250mm CAST IRON

- SC275** — 250mm DUCTILE IRON  
250mm CAST IRON

- SC290** — 225mm (9") SALT GLAZED WARE  
225mm VITRIFIED CLAY  
225mm CONCRETE (O.D.-Up to 290mm)  
250mm ASBESTOS CEMENT  
250mm DUCTILE IRON

- SC320** — 315mm PVCu

- SC335** — 300mm DUCTILE IRON  
300mm CAST IRON

- SC345** — 300mm ASBESTOS CEMENT  
300mm ULTRA-RIB  
300mm QUANTUM  
300mm DUCTILE IRON

- SC360** — 300mm SUPERSEAL/SUPERSLEVE  
300mm RIDGIDRAIN (355mm o/d)  
300mm CORRIPIPE TWINWALL

- SC385** — 300mm (12") SALT GLAZED WARE  
300mm VITRIFIED CLAY  
300mm CONCRETE (O.D.-Up to 385mm)

- SC410** — 300mm CONCRETE (O.D.-Over 385mm)  
400mm PVCu

- SC425** — 300mm CONCRETE (O.D.-Over 405mm)

- SC430** — 400mm DUCTILE IRON  
375mm ASBESTOS CEMENT

- SC445** — 375mm ASBESTOS CEMENT  
400mm DUCTILE IRON  
400mm CAST IRON

- SC465** — 375mm (15") SALT GLAZED WARE  
375mm VITRIFIED CLAY  
375mm CONCRETE (O.D.-Up to 465mm)  
400mm ASBESTOS CEMENT  
450mm PVCu

- SC490** — 375mm CONCRETE (O.D.-Over 456mm Up to 490mm)  
450mm DUCTILE IRON  
450mm ASBESTOS CEMENT

- SC510** — 375mm CONCRETE (O.D.-Over 490mm Up to 510mm)  
400mm VITRIFIED CLAY

- SC525** — 375mm CONCRETE (O.D.-Over 510mm Up to 525mm)

- SC540** — 500mm DUCTILE IRON BSEN595  
500mm CAST IRON (SMU/ENSGN/SML)

- SC560** — 450mm (18") SALT GLAZED WARE  
450mm VITRIFIED CLAY  
450mm CONCRETE (O.D.-Up to 560mm)  
500mm ASBESTOS CEMENT

- SC580** — 450mm CONCRETE (O.D.-Over 555mm Up to 580mm)

- SC600** — 450mm CONCRETE (O.D.-Over 580mm Up to 600mm)

## Standard Coupling Installation

Only **5** simple steps



Scan for a  
demo movie



1. Loosen the clamp bands and slide the coupling onto the first pipe. *No lubricant required.*  
\*AC - Smallest pipe first
2. Make a mark on the second pipe, half a coupling's width from the end to be jointed.
3. Insert the second pipe up to the mark.
4. Tighten the clamp bands to the recommended torque in sequence across the width of the coupling.  
\*SC & LC - Start with the central shear band.
5. Tamp the bedding under the pipe and re-tighten prior to backfilling.

**These instructions are transferable for:**

- Drain Couplings
- Adaptor Couplings
- Large Diameter Couplings



# Drain Couplings

## 40-275mm diameter

Designed for drain construction where resistance to earth loadings normally provided by Standard Couplings is not required.

Fernco Drain Couplings are used to connect, repair and maintain drainage systems and other small diameter non-pressure pipelines.

### Product Range

Product Code	Size (mm)	Width (mm)	Thickness (mm)
DC115	100 - 115	100	7
DC125	110 - 125	120	7
DC135	120 - 135	120	7
DC150	135 - 150	120	7
DC165	150 - 165	120	7
DC175	160 - 175	120	7
DC185	170 - 185	120	7
DC195	180 - 195	120	7
DC215	200 - 215	150	7
DC225	210 - 225	150	7
DC250	235 - 250	150	7
DC265	250 - 265	150	7
DC275	260 - 275	150	7

#### Cross Section



The range is available in nitrile rubber for use with effluent contaminated with hydrocarbons, and with grade 1.4401 (316) stainless steel for improved corrosion resistance.



Scan for a demo movie



## Drain Couplings - Common Applications

- DC115**
- 110mm PVCu
  - 100mm CAST IRON (SOIL) (SMU/ENSGN/SML)
  - 100mm STAINLESS STEEL
  - 100mm CORRUGATED PLASTIC
  - 110mm CORRUGATED PLASTIC

- DC125**
- 100mm SUPERSLEVE
  - 100mm CAST IRON (DRAIN)
  - 100mm DUCTILE IRON
  - 100mm GREY IRON
  - 100mm ASBESTOS CEMENT
  - 100mm PITCH FIBRE
  - 100mm TWINWALL PLASTIC

- DC135**
- 100mm SUPERSLEVE
  - 100mm (4") SALT GLAZED WARE
  - 100mm VITRIFIED CLAY
  - 100mm PITCH FIBRE
  - 100mm ASBESTOS CEMENT

- DC150**
- 125mm CAST IRON (SOIL)
  - 125mm TWINWALL PLASTIC

- DC165**
- 160mm PVCu
  - 150mm CAST IRON (SMU/ENSGN/SML)
  - 150mm STAINLESS STEEL
  - 160mm POLYETHYLENE

- DC175**
- 150mm ULTRA-RIB
  - 150mm QUANTUM
  - 150mm DUCTILE IRON
  - 150mm GREY IRON
  - 150mm TWINWALL PLASTIC (WAVIN/NORFLEX)
  - 150mm CORRUGATED PLASTIC (WAVIN/AQUAPIPE)

- DC185**
- 150mm SUPERSLEVE
  - 150mm PITCH FIBRE
  - 150mm ASBESTOS CEMENT
  - 150mm TWINWALL PLASTIC (B&H/LINFLEX/AQUAPIPE)
  - 150mm CORRUGATED PLASTIC (B&H)

- DC195**
- 150mm SUPERSLEVE
  - 150mm (6") SALT GLAZED WARE
  - 150mm VITRIFIED CLAY
  - 150mm CONCRETE
  - 150mm ASBESTOS CEMENT
  - 150mm PITCH FIBRE





# Adaptor Couplings

## 35-420mm diameter

Designed for connecting pipes of different materials and outside diameters.

The range is available in nitrile rubber for use with effluent contaminated with hydrocarbons, and with grade 1.4401 (316) stainless steel for improved corrosion resistance.



### Product Range

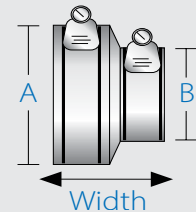
Product Code	Size Range		Width (mm)
	A (mm)	B (mm)	
AC1155	100 - 115	75 - 90	90
AC1201	105 - 120	35 - 45	100
AC1225	110 - 122	48 - 56	100
AC1226	110 - 122	60 - 68	100
AC1221	110 - 122	80 - 95	100
AC5144	110 - 125	100 - 115	100
AC1361	121 - 136	80 - 95	100
AC1362	121 - 136	100 - 115	100
AC4000	121 - 136	110 - 121	100
AC1452	130 - 145	110 - 125	120
AC1552	140 - 155	90 - 105	120
AC1602	144 - 160	110 - 122	120
AC1603	144 - 160	121 - 136	120
AC1702	155 - 170	110 - 125	120
AC1703	155 - 170	130 - 145	120
AC1922	170 - 192	110 - 122	120
AC1923	170 - 192	121 - 136	120
AC1924	170 - 192	144 - 160	120
AC2000	180 - 200	130 - 145	150
AC6001	180 - 200	144 - 160	150
AC2001	180 - 200	155 - 170	150
AC6000	180 - 200	160 - 180	150
AC2100	185 - 210	100 - 115	150
AC2101	185 - 210	160 - 180	150
AC2152o/s	195 - 215	100 - 115	150
AC2154	190 - 215	150 - 165	150
AC2254	200 - 225	160 - 175	150
AC2352	210 - 235	110 - 122	150
AC2353	210 - 235	121 - 136	150
AC2354	210 - 235	144 - 160	150
AC2355	210 - 235	170 - 192	150
AC2356	210 - 235	190 - 215	150
AC2654	240 - 265	144 - 160	150

Continued on next page →

Product Code	Size Range		Width (mm)
	A (mm)	B (mm)	
AC2655	240 - 265	170 - 192	150
AC2656	240 - 265	190 - 215	150
AC2657	240 - 265	210 - 235	150
AC2754	250 - 275	160 - 175	150
AC2756	250 - 275	200 - 225	150
AC9001	260 - 285	180 - 205	150
AC2904	265 - 290	144 - 160	150
AC2907	265 - 290	210 - 235	150
AC2908	265 - 290	235 - 260	150
AC2956o/s	270 - 295	185 - 210	150
AC3204	295 - 320	144 - 160	150
AC3205	295 - 320	170 - 192	150
AC3207	295 - 320	210 - 235	150
AC3208	295 - 320	240 - 265	150
AC3209	295 - 320	265 - 290	150
AC3351o/s	310 - 335	180 - 205	150
AC3608	335 - 360	240 - 265	165
AC3609	335 - 360	265 - 290	165
AC3600	335 - 360	295 - 320	165
AC3858	360 - 385	240 - 265	165
AC3850	360 - 385	300 - 325	165
AC4208	395 - 420	240 - 265	165
AC4209	395 - 420	265 - 290	165

o/s = off set

Most sizes available with nitrile sleeves.



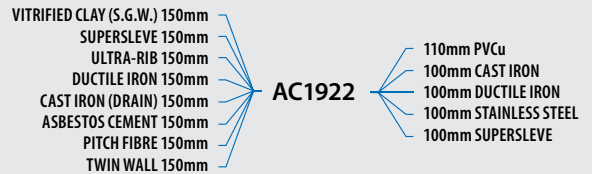
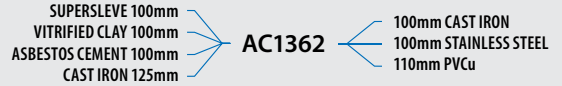
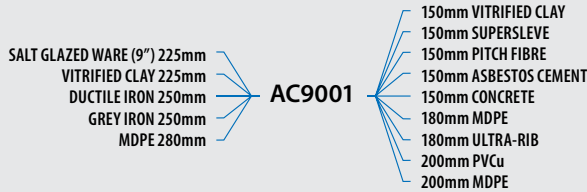
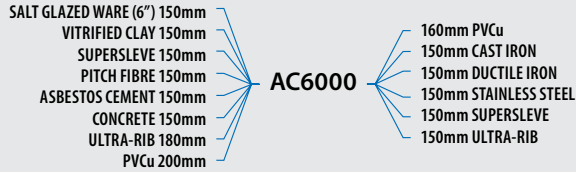
Scan for a demo movie



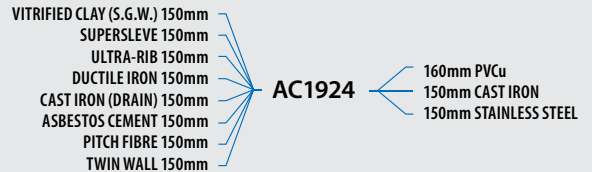
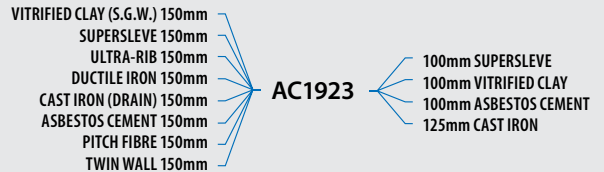
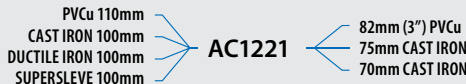
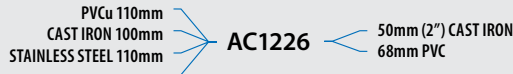
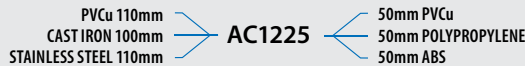
# Adaptor Couplings - Common Applications



## Universal Adaptors



## Drainage Adaptors



# AR Adaptor Couplings



For DN150, 225 & 300 Pipe

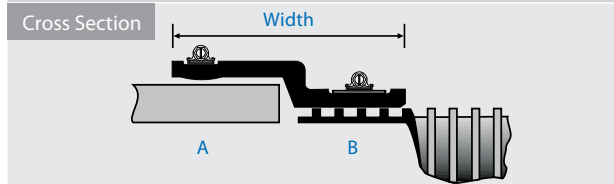
Designed for connecting clay pipe to structural walled and ribbed plastic pipe.

The AR Adaptor incorporates an extra wide clamping band at one end, which seals against two or more of the external ribs on the structural walled plastic pipe.

This ensures a high performance seal is obtained irrespective of the coupling position or movement (see cross section diagram below for reference).

## Product Range

Product Code	Size Ranges		Thickness (mm)
	A (mm)	B (mm)	
AR1500	170 - 192	160 - 170	100
AR2250	260 - 285	240 - 250	130
AR3000	360 - 385	325 - 335	160



# Chemical Coupling



100-1000mm diameter

These couplings incorporate a chemical resistant liner edged with expanded PTFE seals.

They provide a watertight connection where resistance to chemicals is required.



Scan for a demo movie



# Large Diameter Couplings



**600-2100mm diameter**

Designed for sewerage, drainage and all non and low pressure applications.

When used individually or together with Bushes, Fernco Large Diameter Couplings have many applications in the construction, repair or maintenance of pipelines such as a joint for plain ended pipes, repair and maintenance of existing pipelines, making post construction connections to existing sewers and as a joint between pipes of different sizes or materials with a Fernco bush.



## Product Range

Product Code	Size (mm)	Width (mm)	Thickness (mm)
LC600	600 - 699	190	9
LC700	700 - 799	190	9
LC800	800 - 899	190	9
LC900	900 - 999	190	9
LC1000	1000 - 1099	190	9
LC1100	1100 - 1199	190	9
LC1200	1200 - 1299	190	9
LC1300	1300 - 1399	190	9
LC1400	1400 - 1499	190	9
LC1500	1500 - 1599	190	9
LC1600	1600 - 1699	190	9
LC1700	1700 - 1799	190	9
LC1800	1800 - 1899	190	9
LC1900	1900 - 1999	190	9
LC2000	2000 - 2099	190	9

Note: The coupling size range is an indication of size for ordering purposes only. Large Diameter Couplings are manufactured individually to suit customers exact requirements. If you require a connection of over 2100mm, an Extra Wide or Magnum Coupling should be used.

All bespoke couplings are made to measure, available for **same day despatch** and direct to site.



# Extra Wide Couplings



**200-3000+mm diameter**

With a 300mm width, designed for connecting large diameter pipes of any material.

Offers greater tolerance for pipe movement. On site pipe cutting is made easier due to the increased tolerance on the pipe ends.



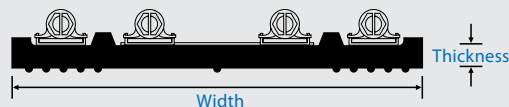
## Applications

- Extra Wide couplings are suitable for the connection of pipes of any material, and any outside diameter above 200mm
- SC Extra Wide Couplings are suitable for pipes from 200mm to 620mm OD
- LC Extra Wide couplings over 600mm diameter are manufactured to exact customer requirements

## When should I use a wider coupling?

- When a pipe has been badly cut and the end is uneven or not square to the axis of the pipe
- When an unusually large gap has to be bridged between the pipe ends
- For use with larger pipes to bridge gaps created by deflection across the joint
- If the pipe diameter is greater than 1000mm

## Cross Section



# Magnum

**300-3000+mm diameter**

The widest flexible coupling in our range, at 370mm.

The greater width enables greater tolerance when cutting the pipe ends, and considerably more freedom of movement during any ground settlement.

The coupling will also withstand pressures of up to 4 bar, dependent on the diameter.

## Product Range

Product Code	Size (mm)	Width (mm)
MAG300	300 - 399	370
MAG400	400 - 499	370
MAG500	500 - 599	370
MAG600	600 - 699	370
MAG700	700 - 799	370
MAG800	800 - 899	370
MAG900	900 - 999	370
MAG1000	1000 - 1099	370
MAG1100	1100 - 1199	370
MAG1200	1200 - 1299	370
MAG1300	1300 - 1399	370
MAG1400	1400 - 1499	370
MAG1500	1500 - 1599	370
MAG1600	1600 - 1699	370
MAG1700	1700 - 1799	370
MAG1800	1800 - 1899	370
MAG1900	1900 - 1999	370
MAG2000	2000 - 2099	370

Note: Larger sizes available on request.

## Pressure Table

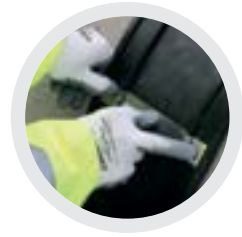
Product Code	Size (mm)	Max Bar
MAG300	300 - 399	4.0
MAG400 - MAG500	400 - 599	2.5
MAG600 - MAG900	600 - 999	1.5
MAG1000 - MAG1300	1000 - 1399	1.0



# Wraparound Couplings

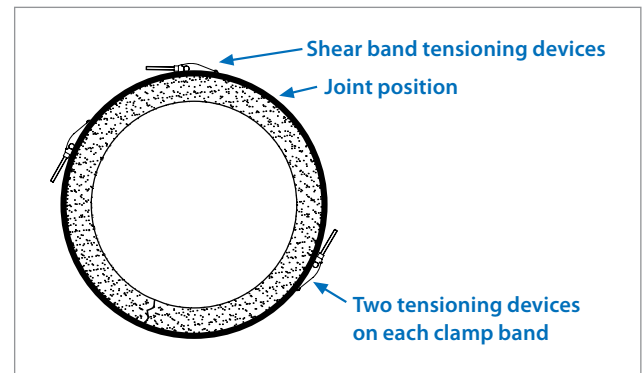
**200-3000+mm diameter**

Designed for the repair of damaged non pressure and low pressure pipelines, without the need to remove and replace a section. Available in 190mm and 370mm widths.



## Features & Benefits

- Manufactured to suit individual requirements
- Repair cracked or damaged pipes without replacing the pipe section
- Used to avoid cutting out sections or dismantling pipe work
- Quick and easy to install
- Reduces cost by cutting time and labour required
- High performance and reliability



Introducing

# ICON Coupling

## Ever needed to connect a pipe that's been cut off at the surface?

The NEW 4 & 6 inch Icon Pushfits can be pushed straight into the problem pipe without the need to chip away the surrounding materials.



Simple and speedy pushfit connection



## Internal Pushfit Coupling

For DN100 and DN150 pipes

For the secure internal connection of pipes for when the external surface is damaged or inaccessible.



It can be installed where the external surface of a pipe is irregular or inaccessible and traditional couplings therefore cannot be used.

### Features & Benefits

- Pushfit connection - no tools required
- Can be easily removed and re-used
- Connects pipes of differing or irregular outside diameters
- No need to clean outside of pipe
- Pipe stop indicates that the product is properly installed, when it is flush to the pipe end
- Quick and easy alternative to a standard coupling

Product Code	Nominal Dia. (mm)	Internal Diameters (ID)
IC95P	100	93mm-98mm
IC95-100P	100	DN100 pipe 1: 93mm-98mm DN100 pipe 2: 99mm-104.5mm
IC100P	100	99mm-104.5mm
IC150P	150	147.5mm-153mm
IC95-150P	100-150	DN100 pipe: 93mm-98mm DN150 pipe: 147.5mm-153mm
IC100-150P	100-150	DN100 pipe: 99mm-104.5mm DN150 pipe: 147.5mm-153mm



01 Clean the internal surface of the pipe from slurry and debris.



02 Push the Icon into pipe 1 up to the product's pipe stop.



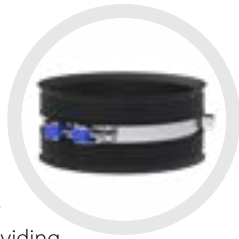
03 Push pipe 2 onto the opposite end of the Icon.

Ensure that the tapered edge on the rubber sleeve does not fold back when inserting into the pipe.

# Internal Mechanical Coupling

## 150-600mm diameter

For the secure internal connection of two pipes for when the external surface is damaged or inaccessible.



The unique Icon bushes fit snugly into the sawtooth profile of the Icon Coupling, providing no loss of pressure or security of seal.

3 thicknesses of bush are available - 1.5mm, 2.5mm and 4mm - offering many thickness options. Accurate measurements of the pipe internal diameters are required to ensure the correct bush combination is recommended.

### Features & Benefits

- Available to suit pipes with internal diameters from 150 - 600mm, larger diameters will be available in due course
- Overall width of the coupling is 130mm
- Stainless steel components are Grade 1.4401 material (316)
- Sizes 150mm up to 300mm with single bolt assembly; sizes greater than 300mm with two bolt assembly
- Seal has tapered end sections for a smooth transition between the pipe bore and the coupling
- Bushes can be used where there is a difference in diameter

### The Range

Product Code	Nominal Dia. (mm)	Icon Bushes - Product Code		
		1.5mm	2.5mm	4mm
IC150	150	BCI015/150	BCI025/150	BCI040/150
IC200	200	BCI015/200	BCI025/200	BCI040/200
IC225	225	BCI015/225	BCI025/225	BCI040/225
IC250	250	BCI015/250	BCI025/250	BCI040/250
IC300	300	BCI015/300	BCI025/300	BCI040/300
IC375	350	BCI015/350	BCI025/350	BCI040/350
IC400	400	BCI015/400	BCI025/400	BCI040/400
IC450	450	BCI015/450	BCI025/450	BCI040/450
IC500	500	BCI015/500	BCI025/500	BCI040/500
IC525	525	BCI015/525	BCI025/525	BCI040/525
IC600	600	BCI015/600	BCI025/600	BCI040/600

In the past there have been several low pressure pipe connections which would challenge any coupling manufacturer. The main examples include:



Connecting with a flat bottomed concrete pipe



When a pipe is sheared close to a surface, with no stub or spigot



When surface damage prevents a reliable external seal



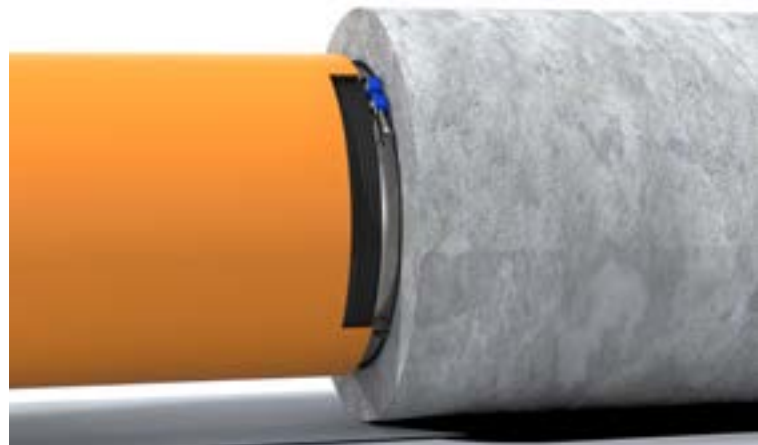
Creating a perfect seal with a spiral reinforced plastic pipe



When part of the exterior of the pipe is buried, or otherwise inaccessible

These challenges have now been overcome. A secure, permanent, watertight and airtight connection is now guaranteed, with the Fernco Icon, on pipes from DN150 to DN600 with an internal circular profile.

With the same ease as any of our other flexible couplings, two pipes of irregular or inaccessible external profile can now be securely connected.



# Multibush

100 & 150mm diameter

For the connection of DN100 & DN150 pipes of differing outside diameters.

Combines three standard bushes into one product by allowing the user to fold the product into different thicknesses.

Using a Fernco Multibush and a Standard Coupling avoids the need to stock different couplings for different connections, and so provides a cost efficient, time efficient and stock efficient pipe connection.

## Product Range

Product Code	Size (mm)
MB100	DN100
MB150	DN150

Multibush fold capabilities




# Bushes

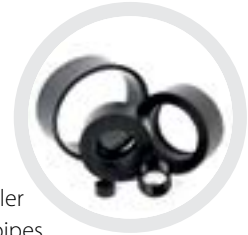
11-3000+mm diameter

Designed for use with couplings when connecting pipes of significantly different outside diameters.

A bush is placed over the end of the smaller diameter pipe, meaning the OD of both pipes becomes equal. The use of bushes simplifies an effective and waterproof connection as it equalises the pipe outside diameters to within 5mm. Fernco Bushes can also be used when a reduction or increase in the pipe size is required by the user. They are available in thicknesses ranging from 8mm to 32mm, and can be fabricated according to site requirements.

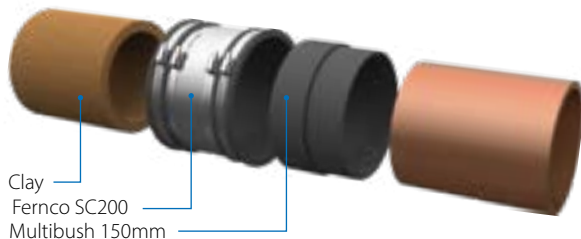
## Applications

- Bushes are used when pipe outside diameters are significantly different
- Multiple combinations of Bushes are available
- When ordering a Fernco Bush, please provide the OD of both pipes
- When conformity with the WIS standard is necessary, use with a standard shear banded coupling



No matter which pipe materials you're working with, the **Fernco Multibush** will guarantee a secure connection.

- Smooth wall PVC
- Cast Iron
- Ductile Iron
- GRP
- Asbestos cement
- SuperSleeve clay
- Twinwall





# Lateral Connections

Save time, labour and cost when connecting lateral pipes into new and existing pipelines by using a secure and reliable Fernco saddle.



Here's our **Unisaddle FA150U** in action.  
Visit our website for info.

## What are the benefits to using Fernco saddles?

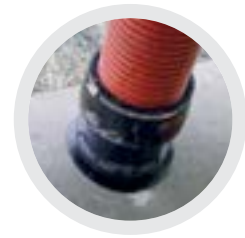
- Lower cost in comparison to junctions
- Makes tenders more competitive
- Install in minutes NOT hours
- Lightweight, easy to handle - one person job
- Only excavate the area of pipe you want to connect into
- No adhesives or sealants required
- Use in conjunction with Fernco couplings/bushes to make saddles more universal and flexible
- A range that's been fully accredited by WRc, recognised by the Water Authorities
- Passes relevant pressure tests for surface water and sewage pipelines

Demo's available, call for details: **01226 340 888**

## Unisaddle's (FA range)

### For connections into concrete

A Fernco FA Unisaddle to connect a 150mm or 200mm DN lateral pipe into a large diameter thick walled sewer or surface water pipe, including Concrete, Vitrified Clay, Asbestos Cement or Fibre Cement. Use in conjunction with a Fernco Multibush to connect any DN150/200 lateral pipe.



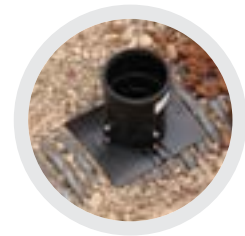
### Which FA Saddle do you need?

	FA150U	FA150B	FA200B
<b>Internal Diameter of Main Pipe</b>	300-450mm	450-1500mm	450-1500mm
<b>Wall Thickness of Main Pipe</b>	27.5-150mm	50-150mm	50-150mm
<b>Lateral Pipe Diameter</b>	DN150	DN150	DN200

## PA Saddle

### For connections into DN300-600 Twinwall

A Plastic Adaptor saddle to connect a 160mm OD lateral pipe into a large diameter Twin Wall or Ribbed Sewer pipe.



There are five models available in this range - PA1530, PA1530UR, PA1540, PA1550 and PA1560.

Each saddle is suitable for connection into a pipe of a different internal diameter, call for details 01226 340 888.

## UA Saddle

### For connections into DN700+ Twinwall

A Universal Saddle to connect a 150mm and 160mm DN lateral pipe into a Large diameter Twin Wall or Weholite Sewer or storage pipe.

The UA Saddle can be used with all lateral pipe materials, only in conjunction with a Fernco coupling. *(Please remember to order a suitable coupling to connect the lateral pipe.)*

#### Performance

- No need to excavate around the pipe and disturb the pipe bedding
- Will withstand 0.5 bar internal pressure
- Withstands a vertical load of 1 tonne
- WRc Approved
- Materials are unaffected by normal ground conditions



## Pipe Seals

Ensure a waterproof seal when a pipe passes through the wall of a tank, pipe or other underground or above ground structure.



## TA Saddle

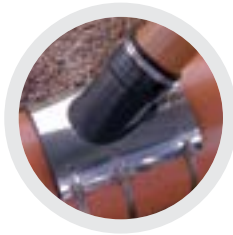
### For connections into 160-600mm smooth plastic

To connect a 110mm, 160mm or 200mm OD lateral pipe into a large diameter smooth wall pipe, including Concrete, Vitriified Clay, Asbestos Cement, Fibre Cement and PVC.

Available for 45° and 90° connections.

#### Performance

- Available for both 45° and 90° lateral connections
- Will withstand 0.5 bar internal pressure
- Can be applied to pipes of any wall thickness
- Seal made on the pipe surface, and secured with straps which pass around the outside of the main pipe



## Cast-in Puddle Flange

### 32-1300mm diameter

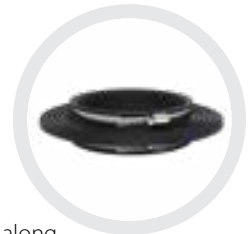
Ensures a watertight seal where pipes pass through the walls of any structure below groundwater level.

Pipes passing through concrete will not bond to the concrete and water can pass along the external surface of the pipe. Fernco Puddle Flanges act as a barrier to this flow. The seal is clamped onto the pipes and stops this direct route.

The Puddle Flange also has a secondary benefit as serving a purpose as a barrier against radon gasses.

#### Features & Benefits

- A cost effective solution
- Can be installed in walls, floors and ceilings
- Easy to install
- Good general chemical resistance



## Cored Wall Seal

**40-1099mm diameter**

For connection of pipes into manholes and other pre-cast structures.

Fernco Wall Seals allow for angular and lateral misalignment of the pipes and provide an effective seal against water penetration along the pipe.



### Features & Benefits

- High performance and effective seal
- Quick and simple installation procedure
- Cost effective and secure solution
- Accommodates deflection and misalignment

## Universal Gully Seal

**200 & 210mm diameter**

For connection of DN150 pipes into monolithic concrete road gullies.

Manufactured from elastomeric material and designed to fit into sockets of all monolithic concrete road gullies, Fernco Universal Gully Seals provide a connection with a range of 150mm nominal bore pipes.



### Features & Benefits

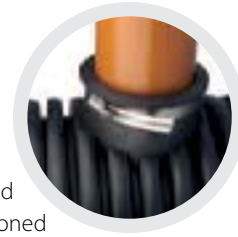
- Quick and simple installation procedure
- Can be applied to various pipe materials

## Insitu-Seal

**40-1099mm diameter**

For a 90° connection into twinwall and ribbed pipe systems.

By drilling a hole into the twinwall or ribbed pipe, the Insitu-Seal is then inserted to allow the connecting pipe to be positioned until it reaches the bottom of the seal.



### Features & Benefits

- Cost effective and efficient method of making connections into twinwalled and structured walled plastic pipe
- Quick and simple installation procedure

## Tank Seal

Tank Seals are a quick reliable method of connecting pipes to thin walled tanks and chambers.

Creates a watertight seal where a pipe passes through the wall of a tank, ensuring no moisture can travel along the pipe length, into or out of the tank.

Fernco's standard tank seal range is suitable for tanks with a maximum wall thickness of 13mm. Fernco can also source tank seals for tanks with other wall thicknesses.



### Features & Benefits

- Cost effective solution
- A proven, tested and durable seal design ensuring a high performance and a reliable connection
- Conforms to BS EN681
- Quick and simple installation procedure

## Pipe Lubricant

Pipe Lubricant STONEWARE BLUE for Clay pipes: a blue paste developed for easy assembling of Clay pipes and other stone parts in sewerage systems.

Pipe Lubricant DSO for concrete pipes: a grey paste, developed for easy assembly of concrete pipes and other parts in sewerage systems.

Pipe Lubricant NEUTREX® for plastic pipes: a white, water miscible paste based on synthetic materials. Standard application: general plumbing and construction. Neutrex is approved for drinking water applications after DVGW as well as WRAS.



### Product Range

Product Code	Description	Size	Box Quantity
PL500NX	Ferco Pipe Lubricant for Plastic Pipe	500ml Tube	24
PL1NX	Ferco Pipe Lubricant for Plastic Pipe	1kg Tub	6
PL1SB	Ferco Pipe Lubricant for Clay Pipe	1kg Tub	6
PL3NX	Ferco Pipe Lubricant for Plastic Pipe	3kg Tub	4
PL3SB	Ferco Pipe Lubricant for Clay Pipe	3kg Tub	4
PL5DSO	Ferco Pipe Lubricant for Concrete Pipe	5kg Tub	1

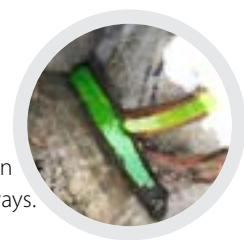
Health & Safety data sheets available on request.



## Drain Tracing Dye

Designed to clearly trace the flow of water.

Drain Dye is a non-toxic and odourless drain tracer product for finding leaks, drain damage, contamination and water pathways. It is easy to use, non-harmful and highly concentrated.



Available in **6 colours**.

- Red
- Green
- Orange
- Blue
- Purple
- Yellow

The Drain Dye adds a strong colour to water - use just a teaspoon of Drain Dye with 10 litres of water to trace the underground flow of a drainage system. Whether a sewerage pipe or grey water system, the Drain Dye is a quick and simple system, giving the information you need to proceed with a project.



# Plumbing Products

Fernco boast a wide range of products suitable for plumbing applications, such as, plumbing couplings, fibreglass wraps for burst pipes and air admittance valves.



## EPDM Straight Plumbing Couplings

### 30-100mm diameter

Flexible couplings for low pressure plumbing applications.

The range is available in nitrile rubber for use with effluent contaminated with hydrocarbons, and with grade 1.4401 (316) stainless steel for improved corrosion resistance.



#### Product Range

Product Code	Size (mm)	Shearband
PC35	30 - 35	-
PC43	38 - 43	-
DC50	40 - 50	-
PC56	48 - 56	-
SC65	50 - 65	Shearbanded
DC65	50 - 65	-
PC68	60 - 68	-
SC75	60 - 75	Shearbanded
DC75	60 - 75	-
PC76	67 - 76	-
SC85	70 - 85	Shearbanded
PC85	76 - 85	-
SC95	80 - 95	Shearbanded
DC95	80 - 95	-
PC92	82 - 92	-
PC100	90 - 100	-



## EPDM Adaptor Plumbing Couplings

### 30-92mm diameter

The range is ideal for the connection of pipes with differing outside diameters whether due to different pipe materials or pipe sizes, and also for use on smaller diameter pipes in most low/non pressure plumbing applications.



#### Product Range

Product Code	Size (mm) Pipe A	Size (mm) Pipe B
PAC0301	30 - 34	24 - 28
PAC0431	38 - 43	30 - 35
PAC0562	48 - 56	38 - 43
AC633	53 - 63	40 - 50
PAC0682	60 - 68	38 - 43
AC894	75 - 89	53 - 63
PAC0923	82 - 92	48 - 56
PAC0924	82 - 92	60 - 68



## EPDM Plumbing Elbow

30-118mm diameter

Flexible couplings for low pressure plumbing applications.



### Product Range

Product Code	Size (mm)
PE38	30 - 38
PE50	40 - 50
PE60	50 - 60
PE90	78 - 90
PE118	106 - 118

## EPDM Plumbing Tee

30-118mm diameter

Flexible couplings for low pressure plumbing applications.



### Product Range

Product Code	Size (mm)
PT38	30 - 38
PT50	40 - 50
PT60	50 - 60
PT90	78 - 90
PT118	106 - 118

## EPDM End Caps

28-360mm diameter

For a watertight cap on a pipe end, with an optional air test nipple.



### Product Range

Product Code	Size (mm)	Product Code (with air test nipple)
REC36	28 - 36	REC36T
REC45	37 - 45	REC45T
REC56	48 - 56	REC56T
REC68	60 - 68	REC68T
REC76	67 - 76	REC76T
REC85	76 - 85	REC85T
REC92	82 - 92	REC92T
REC115	105 - 115	REC115T
REC135	125 - 135	REC135T
REC165	155 - 165	REC165T
REC173	163 - 173	REC173T
REC190	180 - 190	REC190T
REC212	200 - 212	REC212T
REC250	235 - 250	REC250T
REC270	255 - 270	REC270T
REC315	300 - 315	REC315T
REC360	345 - 360	REC360T



# PlumbQwik Couplings

PlumbQwik™ is a range of plumbing couplings by Fernco for above ground drainage applications, commonly found under kitchen sinks, shower trays, baths, behind washing machines etc.



## Features & Benefits

- Creates a watertight seal between two plain ended pipes
- Designed for waste and grey water applications
- Connect what would normally be incompatible pipe systems
- Large range of straight and adaptor variations
- Extremely easy to fit using a nut driver
- Remove and re-fit as required



Straight PlumbQwik™



Adaptor PlumbQwik™



Elbow PlumbQwik™



Tee PlumbQwik™



End Cap PlumbQwik™

## Straight Product Range

Product Code	Reference	Size Range (mm)	Colour
PQ028	E028-028BL   027-027	21-29	Black
PQ028_GREY	E028-028G	21-29	Grey
PQ038	E038-038BL   035-035   TC-150	30-39	Black
PQ038_GREY	E038-038G	30-39	Grey
PQ042	E042-042BL   041-041	31-40	Black
PQ042_GREY	E042-042G	31-40	Grey
PQ045	E045-045BL   041-041	37-45	Black
PQ045_GREY	E045-045G	37-45	Grey
PQ050	E050-050BL   049-049	40-49	Black
PQ050_GREY	E050-050G	40-49	Grey
PQ058	E058-058BL   059-059	50-59	Black
PQ058_GREY	E058-058G	50-59	Grey
PQ063	E063-063BL   062-062	53-62	Black
PQ063_GREY	E063-063G	53-62	Grey
PQ068	070-070	60-69	Black
PQ068_GREY	E068-068G	60-69	Grey
PQ085	E085-085BL   086-086	75-86	Black
PQ085_GREY	E085-085G	75-86	Grey
PQ090	E090-090BL   090-090	78-89	Black
PQ090_GREY	E090-090G	78-89	Grey
PQ095	E095-095BL	85-96	Black
PQ095_GREY	E095-095G	85-96	Grey
PQ101	101-101	95-101	Black
PQ112	112-112	101-112	Black
PQ112_GREY	E112-112G	101-112	Grey
PQ122	E122-122BL   121-121	110-123	Black
PQ122_GREY	E122-122G	110-123	Grey
PQ130_GREY	E130-130G	120-130	Grey
PQ133	133-133	127-133	Black
PQ142	142-142	136-142	Black
PQ162	162-162	152-162	Black
PQ188	188-188	180-188	Black



## Adaptor Product Range

Product Code	Reference	Size Range A (mm)	Size Range B (mm)	Colour
PQ040-032		32-41	25-33	Black
PQ040-032_GREY	E040-032G	32-41	25-33	Grey
PQ045-038_GREY	E045-038G   DTC038   DTC-110	37-46	30-39	Grey
PQ050-032_GREY	E050-032G	42-51	25-33	Grey
PQ050-042	E050-042BL   049-041	40-49	32-41	Black
PQ050-042_GREY	E050-042G	40-49	32-41	Grey
PQ058-038	060-034   060-038	50-59	30-39	Black
PQ058-038_GREY	E058-038G	50-59	30-39	Grey
PQ058-045	E058-045BL   059-048   061-047	50-59	37-46	Black
PQ058-045_GREY	E058-045G	50-59	37-46	Grey
PQ070-060	070-060	65-70	57-60	Black
PQ085-058	E085-058BL   084-060	75-86	50-59	Black
PQ085-058_GREY	E085-058G	75-86	50-59	Grey
PQ085-068_GREY	E085-068G	75-86	60-69	Grey
PQ086-047	086-047	80-86	44-47	Black
PQ101-089	101-089	95-101	85-89	Black
PQ112-045	E112-045BL   111-049	100-113	37-46	Black
PQ112-045_GREY	E112-046G	100-113	37-46	Grey
PQ112-050	E112-050BL   111-049	98-111	40-49	Black
PQ112-050_GREY	E112-050G	98-111	40-49	Grey
PQ112-085	E112-085BL   111-085	100-113	75-86	Black
PQ112-085_GREY	E112-085G	100-113	75-86	Grey
PQ113-059	113-059	106-113	53-59	Black
PQ122-112	E122-112BL   123-111	110-123	100-113	Black
PQ122-112_GREY	E122-112G	110-123	100-113	Grey
PQ124-118	1003-44	114-124	104-118	Black
PQ127-115	127-115	118-127	104-115	Black
PQ130-122_GREY	E130-122G	118-131	110-123	Grey
PQ133-084	133-084	111-133	79-84	Black
PQ133-112	133-112	111-133	104-112	Black
PQ135-115	135-115	113-135	107-115	Black
PQ135-115_GREY	E135-115G	113-135	107-115	Grey
PQ142-111	142-111	136-142	101-111	Black
PQ160-133	160-133	149-160	111-133	Black
PQ163-111	163-111	155-163	101-111	Black
PQ187-111	187-111	177-187	101-111	Black
PQ190-162	190-162	177-190	152-162	Black

## Elbow Product Range

Product Code	Reference	Size Range (mm)	Colour
PQE038	E038LBL	30-38	Black
PQE038_GREY	E038LG	30-38	Grey
PQE048	048L	41-48	Black
PQE048_GREY	048LG	41-48	Grey
PQE062	060L	54-62	Black
PQE062_GREY	060LG	54-62	Grey
PQE085	085L	80-89	Black
PQE085_GREY	085LG	80-89	Grey
PQE112	112L	105-116	Black
PQE112_GREY	112LG	105-116	Grey
PQE112	112L	105-116	Black
PQE112_GREY	E112LG	105-116	Grey

## Tee Product Range

Product Code	Reference	Size Range (mm)	Colour
PQT038	E038TBL	30-38	Black
PQT038_GREY	E038TG	30-38	Grey
PQT048	048T	41-48	Black
PQT048_GREY	048TG	41-48	Grey
PQT062	060T	54-62	Black
PQT062_GREY	060TG	54-62	Grey
PQT085	085T	80-89	Black
PQT085_GREY	085TG	80-89	Grey
PQT112	112T	105-116	Black
PQT112_GREY	112TG	105-116	Grey

## End Cap Product Range

Product Code	Reference	Size Range (mm)	Colour
PQC028	028C	25-28	Black
PQC042	042C	35-47	Black
PQC048	E048C	43-50	Black
PQC048_GREY	E048CG	43-50	Grey
PQC060	060C	54-63	Black
PQC070	070C	60-70	Black
PQC089	085C	80-89	Black
PQC100	100C	88-100	Black
PQC112	112C	108-114	Black
PQC112_GREY	E112CG	105-116	Grey
PQC125	125C	115-125	Black
PQC142	142C	135-146	Black
PQC162	162C	150-162	Black
PQC181	181C	170-181	Black
PQC215	215C	204-220	Black
PQC230	230C	233-237	Black
PQC250	250C	243-257	Black
PQC274	274C	268-280	Black
PQC328	328C	322-334	Black
PQC358	358C	352-364	Black

# Pow-R Wrap

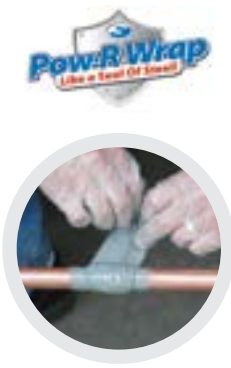
Up to 150mm diameter

A fast and easy to use, water-activated fibreglass wrap pipe repair. Suitable for virtually any pipe material.

Pow-R Wrap is a complete, self-contained kit that includes a resin impregnated fibreglass tape in a foil bag, epoxy putty to enhance the repair and a pair of protective gloves. There are three convenient size kits to choose from – for pipe diameters up to 25mm, 74mm and 150mm.

## Features & Benefits

- Repairs virtually any material
- Works on wet, dry, clean, dirty or corroded pipes
- Fast repair – cures in up to 30 minutes
- No tools required
- No harmful solvents – suitable for potable water and food service lines
- Chemically resistant to diesel fuel, petroleum products, halocarbon and (after curing) alcohols



# Air Admittance Valves (AAVs)

32-110mm diameter

The AirSure® AAVs allow air to freely enter the sanitary pipe work system and prevent the escape of foul gasses into the building.

The AirSure® range can be used for domestic and commercial applications and consists of a variety of sizes. The 32mm, 40mm and 50mm Air Admittance Valve provides a universal connector for waste pipes and the 82mm to 110mm Air Admittance Valves are ideal for soil pipe systems.

## Applications

- Ideal for sanitary pipework systems
- Suitable for 32mm, 40mm and 50mm waste pipes and 82mm and 110mm soil based pipe systems
- Can be used as a secondary rodding point to remove drainage blockages

## Product Range

Product Code	Size (mm)	Fitting Type
FAF32W	32/40/50	Universal
FAV110W	110	Solvent Weld
FRG110W	110/82	Push Fit



# Channel Drainage



1m length per channel

A unique and easy to install surface water channel drainage system for a domestic environment.



It provides a complete solution for the collection and dispersal of surface water through the unique channel drainage system.

Available as 1m lengths, the system can be combined with a range of innovative accessories.

## Features & Benefits

- 3 base outlets
- Aesthetically pleasing, quality grate
- Conforms to BS EN 1433: Load class A15
- Heelguard grate as standard
- Easy connection system
- Efficient quad connector available
- Cross braced design prevents floating during installation

## Product Dimensions



Heelguard



Load class A15



# Accessories



The complete range of accessories combines to create a full, flexible system, with features for easy installation.



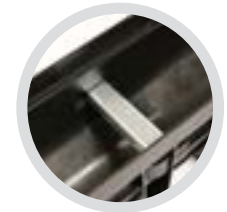
Quad connector



Jointing clip



Sump unit



Support bracket



End outlet



End cap

# Slot Drain

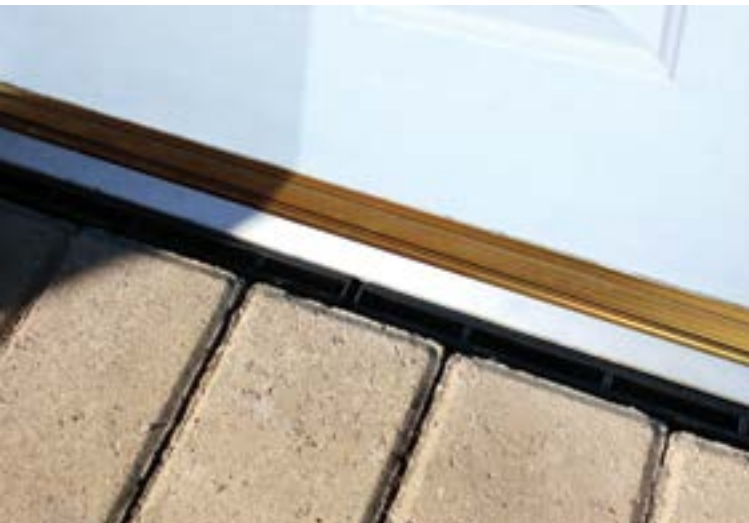
1m length per channel

A quality, discreet drainage channel for domestic block paved areas, commonly used in front of door thresholds.

The Fernco slot drainage product combines subtlety, quality and effectiveness to provide a water management system that is ideal for domestic applications. As well as providing aesthetically pleasing results, Fernco's slot drain is an effective domestic water management system with a flow rate of 4.5 l/s and the flexibility to be installed in areas with light vehicle access.

## Features & Benefits

- Ideal for domestic, threshold and light vehicle areas only
- Can handle a flow rate of 4.5 l/s
- 100% recycled polypropylene, so light & easy to install
- Base tested to BS EN 1433
- Positive mechanical joint between each channel length
- Can be installed with block paving or concrete surround



# Access Point

AccessPoint

Withstands up to 1 bar

The Access Point offers a secure point of entry into DN70, DN100 and DN150 plastic, ductile and cast iron pipes. It is designed for entry into drainage systems where no man hole exists, or there is no other means of access.

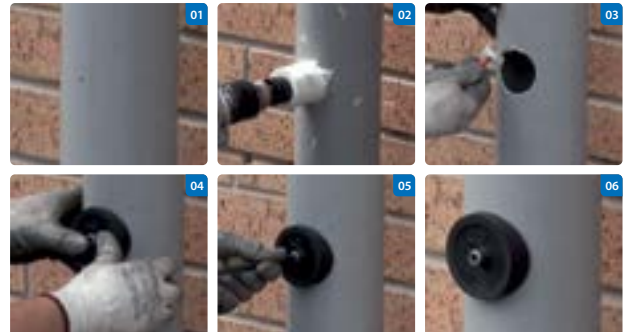
The core drill cuts a hole of 54mm and is supplied with an arbour and a pilot drill. Installation takes less than a minute, although this may increase when cutting into very old cast iron pipe.

## Features & Benefits

- Quick and easy installation
- Can be removed and refitted
- Withstands up to 1 bar
- Pre-assembled for direct insertion into the host pipe



Available as a kit including fitting tools



# Non-Return Valves

## 100-150mm diameter

For simple retrofit installation into existing manholes.

To prevent foul water flowing back from the blocked sewerage system to flood the property from the inside via toilets, plug holes and waste pipes.

These unique Retrofit Non-Return Valves can be simply pushed in to the existing pipework, whether plastic or clay, at the property's inspection chamber. The valves can be fitted in minutes and do not require any specialist expertise or equipment.

### Features & Benefits

- Simple push-fit installation into existing manhole
- Unobtrusive when installed
- Two sizes available to suit DN100 and DN150 pipes
- Universal for all pipe materials within the products size range
- Protects against back flow and pests, such as rats and other rodents
- Stainless steel reinforced flap for added protection against rodent infestation
- NRV100 WRc Approved



# Backwater Valves

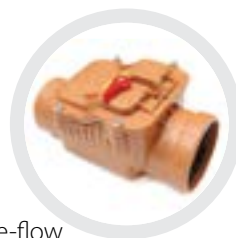
## 110-200mm diameter

Protect buildings against flooding due to rainwater travelling back up the sewerage system.

Automatically operated, providing free-flow wastewater drainage according to the slope of the rainwater drain. These backwater valves are available in a wide range of sizes and are easy to install in waste water networks and systems with pipes of 110 to 200mm diameter.

### Features & Benefits

- Stainless steel anti-flooding flaps
- Special design of the body minimises the risk of solid waste accumulating and blocking inside the valve
- Also suitable as a rodent deterrent
- Backwater valves are 100% tested for safety and comply with the guidelines set out in BS EN 13564
- Robust design and maintenance-free operation



### Product Range - Single Flap *(suitable for stormwater applications)*

Product Code	Description
BWV110/1	110mm Backwater Valve - single flap
BWV160/1	160mm Backwater Valve - single flap
BWV200/1	200mm Backwater Valve - single flap

### Product Range - Double Flap *(suitable for foul sewerage applications)*

Product Code	Description
BWV110/2	110mm Backwater Valve - double flap
BWV160/2	160mm Backwater Valve - double flap
BWV200/2	200mm Backwater Valve - double flap

# Penstocks

## 150-600mm diameter + bespoke

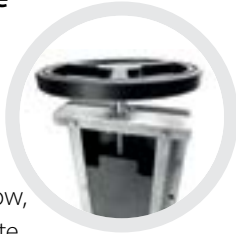
A sluice gate for controlling water flow, available in a wide range of sizes.

Penstocks are used to control liquid flow, in applications that include water, waste water and sewage treatment plants, drainage infrastructure, waterways, power plants, industrial effluent plants and hydro power.

There is a range of operating gear options available, from spindle extension sets through to fully automated systems. Non-rising spindles are fitted as standard, although rising spindles are also available.

### Features & Benefits

- Much lighter in weight than penstocks of other materials, with no cranes required during installation
- Gasket forms watertight seal between penstock and wall, so that grouting is not necessary
- The above benefits can reduce installation time from an average of three days with traditional penstocks, down to around three hours on average
- Self-lubricating door nut requires no maintenance, provided the penstock is operated once a year
- Materials used are corrosion resistant, offering a long life and low maintenance costs



### Product Range *(bespoke sizes are available)*

Product Code	Diameter (Ø)	A Total Width (mm)	B Total Height (mm)	Mounting Set
PS150	150	330	600	PSMS150
PS200	200	380	680	PSMS200
PS250	250	430	780	PSMS250
PS300	300	480	880	PSMS300
PS400	400	670	1155	PSMS400
PS500	500	770	1370	PSMS500
PS600	600	870	1550	PSMS600

### Optional features, also available:

- Non-standard sizes
- Electric, hydraulic or pneumatic operating systems
- Rising spindle
- Wedge construction
- Accessories, including hand wheels, guide brackets, tee keys and caps



# Flap Valves

## DN100-600

A flap valve is a simple, one-way valve that allows the flow of water in one direction while preventing flow in the opposite direction.



The primary application of flap valves is for surface water drainage associated with rivers, estuaries and sea water outfalls, to prevent reverse flow conditions. Flap valves can be utilised on final effluent outfalls for sewage treatment plants to prevent flood damage within the works.

### Features & Benefits

- Standard 6 mvc
- Flange sealed on one side
- Mounting flat structure, PVC, concrete or internal rounded pit
- High duty construction
- Light construction and thus easier installation and lower installation costs
- Minimum maintenance
- Less hydraulic losses



**Mounting Set**  
also available



# Standards & Accreditations

Fernco operates a Quality Management System which



complies with the requirements of BS EN 9001:2015 (certificate No: FM91289), and an Environmental Management System which complies with the requirements of ISO 14001:2015 (certificate No. EMS 563613).

**Standard: BS EN 295:4 Vitrified clay pipes and fittings and pipe joints for drains and sewers: Requirements for special fittings, adaptors and compatible accessories**



Applicable Market: Europe

These products are manufactured under Kitemark licence No: KM22943

Products Covered: All types of pipe couplings and bushes

Sizes Covered: Nominal sizes 100mm to 1000mm

Relevant Fernco products are:-

Type 1 Drain Couplings	DC115 - DC275
Adaptor Couplings	AC1155 - AC4209
Type 2B (Shear Banded Couplings)	SC115 - LC1000
Type 2B Extra Wide Couplings	C225W - LC1000W
Bushes	Bushes with nominal sizes 100 - 1000mm

**Standard: WIS4-41-01 Specification for flexible couplings for gravity sewerage and drainage pipes**



Applicable Market: UK

These products are manufactured under Kitemark licence No: KM33192

Products Covered: Shear banded couplings and bushes

Sizes Covered: Nominal sizes 100mm to 620mm

Relevant Fernco products are:-

Type 2B (Shear Banded Couplings)	SC115 - SC620
Bushes	Bushes with nominal sizes 100- 620mm

**Standard: BS EN 681:1 Elastomeric seals - Material requirements for pipe joint seals used in water and drainage applications. Vulcanized rubber**

Applicable markets: All

Certification is held for all the elastomeric compounds used

Products Covered: All elastomeric products covered by the standards above.

**CE Marking/ UKCA Mark**

The CE mark is a claim that a construction product can be legally placed on the market of member's states of the European Economic Area (EEA) and is based on the principal that the product has passed specific performance tests.



Fernco use the CE mark on those products where there is an applicable harmonised standard. A Declaration of Performance is available which states the products listed are in conformity with the provisions of the Construction Products Regulation.

**Standard: DIN EN 295:4 Vitrified clay pipes and fittings and pipe joints for drains and sewers: Requirements for special fittings, adaptors and compatible accessories.**

Applicable Market: Europe but through the German market. These products are manufactured under 'U' Mark scheme with product surveillance undertaken by MPA NRW

Products Covered: All types of pipe couplings and bushes

Sizes Covered: Nominal sizes 100mm to 1000mm

Relevant Fernco products are:-

Type 1 Drain Couplings	DC115 – DC275
Adaptor Couplings	AC1155 – AC4209
Type 2A (Shear Banded Couplings)	TC135 – TC590
Type 2B (Shear Banded Couplings)	SC115 – LC1000
Type 2B Extra Wide Couplings	SC225W – LC1000W
Bushes	Bushes with nominal sizes 100mm to 1000mm

**Standard: WRC Approved**



Applicable Market: UK

Products Covered:

Unisaddle FA150U	PA Saddle
Unisaddle FA150B	UA Saddle
Unisaddle FA200B	Icon Coupling Range



**Standard: Approval of Sanitary Materials Godkendelse VA.23/18397**

Applicable Market: Denmark



**Standard: AS/NZS 4327 Metal-banded flexible couplings for low pressure applications**

Applicable Market: Australia and New Zealand



**Standard: Approval of Sanitary Materials SINTEF Accreditation No: 0425**

Applicable Market: Norway



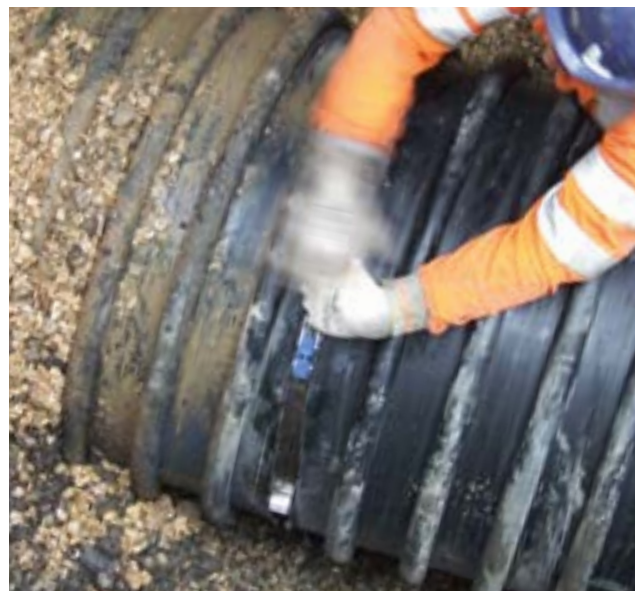
## Pressure Table

Coupling Type	Coupling Size	Internal Bar	Pressure psi
Standard Couplings	SC115-SC620	2.5	36.25
Wide Standard Couplings	SC225W-SC620W	2.5	36.25
Icon Pushfit Couplings	All Sizes	2.5	36.25
Icon Mechanical Couplings	IC150-IC600	2.5	36.25
Large Couplings	LC600-LC900	1.5	21.75
	LC1000-LC1300	1.0	14.5
Wide Large Couplings	LC600W-LC900W	1.5	21.75
	LC1000W-LC1300W	1.0	14.5
Magnum Couplings	MAG300	4.0	58
	MAG400-MAG500	2.5	36.25
	MAG600-MAG900	1.5	21.75
	MAG1000-MAG1300	1.0	14.5
Wraparound Couplings	All Sizes	0.6	8.5
Drain Couplings	All Sizes	0.6	8.5
Adaptor Couplings	All Sizes	0.6	8.5
Plumbing Couplings	All Sizes	0.6	8.5
Chemical Couplings	All Sizes	0.6	8.5



## Torque Table

Coupling Type	Coupling Size	Torque (Nm)
Standard Couplings	SC65 – SC200	6
	SC215 – SC620	13
Extra Wide Couplings	SC225W – SC620W	13
Icon Mechanical Couplings	IC150-IC600	15
Large Diameter Couplings	LC600 – LC900	20
	LC1000 +	25
Extra Wide Large Diameter Couplings	LC600W – LC900W	20
	LC1000W	25
Magnum Couplings	MAG300 – MAG900	20
	MAG1000 +	25
Wraparound Couplings - 190mm wide	WRC100/200	13
	WRC300 – WRC900	20
	WRC1000 +	25
Wraparound Couplings - 370mm wide	MAGWRC300 - MAGWRC900	20
	MAGWRC1000 +	25
Drain Couplings	DC50 – DC250	6
	DC275	13
Adaptor Couplings	Up to AC2756	6
	AC9001 – AC4209	13
Plumbing Couplings	All Sizes	6



# Pipe Diameter Table

Pipe Classification	100	125	150	175	180	200	Nominal Sizes (DN)				350	375	400	450	500	525	600
	130 - 133	139	186 - 190	220	245 - 248	269 - 278	225	250	300	350	375	400	450	500	525	600	
Salt Glazed Ware / Vitrified	130 - 133	139	186 - 190	220	245 - 248	269 - 278	225	250	300	350	375	400	450	500	525	600	
Old Scottish Clay	139																
Supersieve Superseal Hepseal	122		178			263		357									
Denseal																	
Concrete			200			286 - 305	260	288		457 - 520	525 - 590	542 - 590	602	660 - 690	760 - 795		
Asbestos Cement																	
(L)	125		182	208		232	260	288									
(M)																	
(H)																	
Pitch Fibre	125		181	238													
PVCu	110		160		200		250	315				400	450	500			
A B S	110		160	200	225		280	315									
Polyethylene	111	126	161		181	201	226	251	317	357		402	453	503			
Vulcathene	114		168														
Lightweight Corrugated PVCu	110		170				250										
Ultra-Rib			170		200		250		335	400				560			
Ultra-Fortis			170				250		335								

Twin Wall (Polypipe)	119	150	180			235	260		360			455	490	590		690
Ridgidrain (Polypipe)	118		178			234	267		355		435	457	512	569		674
Ridgisewer (Polypipe)												457	511	568		672
Polysewer (Polypipe)			160				250		330							
Quantum PVC Twin Wall (Sewer)			160 - 175				250 - 275		330 - 340							
Corripipe Twin Wall (JFC)			180				268		355		426		510			675
Twin Wall corrugated HDPE (Wavin)							266		354							
Ductile Iron BSEN598	118		170			222	258	274	326	378	403	429	480	532		635
Cast Iron (SMU/Ensign/SML)	112	137	162			212	277		329			431		534		637
Cast Iron BS437 (Drain)	119		173				256									
Cast Iron BS416 (Soil)	114	140	165			210										
Grey Iron BS4622	118		170			222		274	326			429	480	532		
Stainless Steel	110		160													
Copper	108															
Aluminium	102															

Ensure pipe diameters are accurately measured on site prior to ordering. These may be subject to change by the manufacturer.

# Conversion Chart

Pressure		Length		Temperature		Weight	
bar	psi	mm	inch	°C	°F	lbs	Kg
0.5	7.25	25.4	1	-10	14	1	0.45
1	14.5	50.8	2	0	32	2	0.91
1.5	21.75	76.2	5	5	41	5	2.27
2	29	254	10	10	50	10	4.54
2.5	36.25	381	15	20	68	25	11.34
5	72.5	635	25	30	86	50	22.68
10	145	1016	40	50	122	100	45.36
25	362.5	1270	50	100	212	500	226.80
40	580	2540	100	200	392	1000	453.59



Please contact us if you'd like more information:

Endeavour Works, Newlands Way, Valley Park,  
Wombwell, Barnsley, S73 0UW, England



**Fernco App**  
for iOS & Android



+44 (0)1226 340 888



sales@fernco.co.uk



www.fernco.co.uk